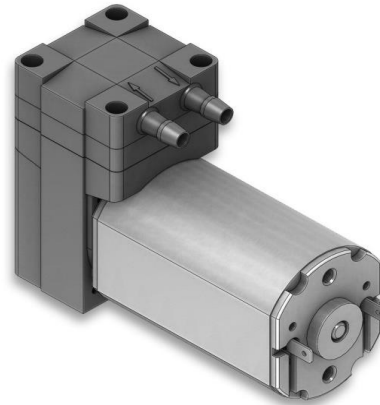
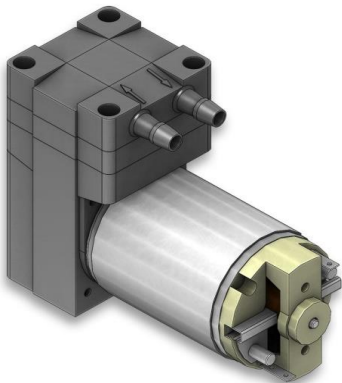
SP 600 EC  
SP 620 EC

SP 625 EC-LC

SP 600 EC-LC  
SP 620 EC-LC

## We care.

Customised Pumps - No Additional Costs!

### Product Features

- Miniature diaphragm pump for gases
- Vacuum or pressure optimized pump design
- High efficiency and available in common supply voltages
- From low-cost to durable drives
- Low weight and small size
- Applicable for noise- and vibration-sensitive environments (i.e. hospitals, personal protection equipment, etc.)
- Installation in any mounting orientation allows simple device integration
- Leak-tight, oil-free and maintenance-free

### Application Examples

Particularly suitable for portable and stationary devices such as:

- Gas analysers
- Anaesthesia monitoring
- Auto samplers
- Dental vacuum pump
- Exhaust or flue gas analyzers
- Blood pressure monitoring
- Industrial pressure and vacuum
- Chromatography
- Pipetting devices

and many more...


### Customisation

- We offer your customised precision pump without additional costs - even for small batches
- Our modular concept allows easy adaptations
- Outstanding quality - Made in Germany
- Excellent technical consultation and service by experts
- More than 40 years experience in pump applications
- Manifold mounting
- Fast delivery - order your sample now!



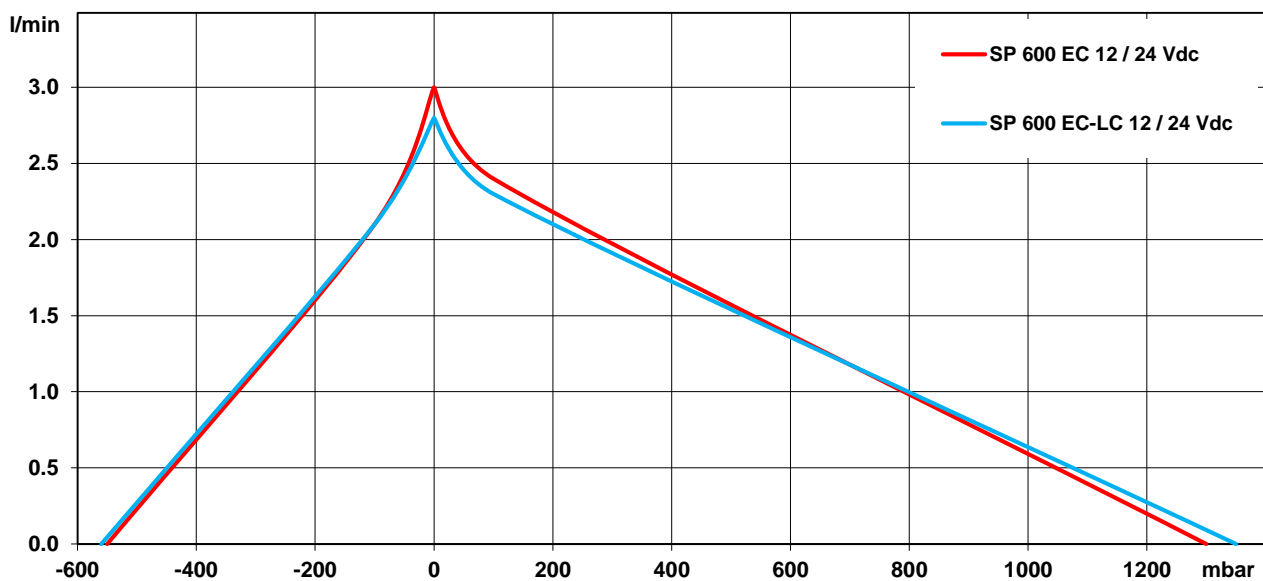
# SP 600 / 620 / 625 EC

The pumps listed below represent a typical selection of our wide range of eccentric pumps and are intended for initial tests. **Customised versions** for your individual application would be made without additional costs - please contact us! All flow values given under norm conditions (according to DIN 1343). Optional materials can cause deviating performance values.

Designation		SP 600 EC		SP 600 EC-LC	
Art. No.		7s52115	 7s52116 [1]	7s52100	7s52101
Operating Voltage [Vdc]		12	24	12	24
<b>Pneumatic Performance</b>					
Free Flow [l/min]		3.0	3.0	2.8	2.8
<b>Pressure Side</b>					
Flow at 100 mbar [l/min]		2.4	2.4	2.3	2.3
max. Pressure [mbar]		1300	1300	1350	1350
<b>Vacuum Side</b>					
Flow at -100 mbar [l/min]		2.1	2.1	2.1	2.1
max. Vacuum [mbar]		-550	-550	-560	-560
<b>Motor / Power Consumption</b>					
Standard Motor Type		iron core / ball bearings		iron core / sintered bearings	
max. Nominal Current [mA]		360	180	390	195
Optional Motor Type		sintered bearings		-	
<b>Construction</b>					
Pump Head	standard optional	PPS customer specific (upon request)			
Diaphragm, Valves	standard optional	EPDM FKM / FFKM / PTFE			
Weight [g]		184		165	

[1] These pumps are our basic types for initial tests. Quick availability: **Shipping within 24 hours!**

## Performance Curves



Am Lichtbogen 7 • 45141 Essen • Germany  
 Phone: +49 201 31697-0 • Fax: +49 201 31697-29  
 e-mail: [info@schwarzer.com](mailto:info@schwarzer.com) • <http://www.schwarzer.com>

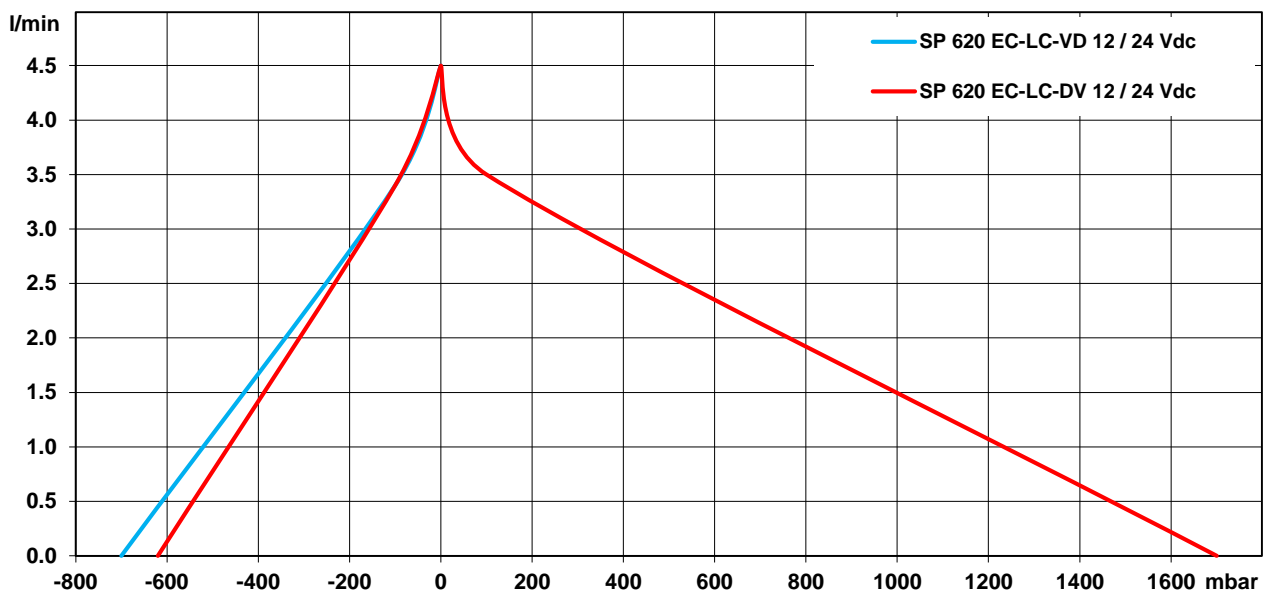


# SP 600 / 620 / 625 EC

The pumps listed below represent a typical selection of our wide range of eccentric pumps and are intended for initial tests. **Customised versions** for your individual application would be made without additional costs - please contact us! All flow values given under norm conditions (according to DIN 1343). Optional materials can cause deviating performance values.



Designation	SP 620 EC-LC-DV		SP 620 EC-LC-VD	
Art. No.	7s57004	7s57005	7s57223	7s57224
Operating Voltage [Vdc]	12	24	12	24
<b>Pneumatic Performance</b>				
Free Flow [l/min]	4.5	4.5	4.5	4.5
<b>Pressure Side</b>				
Flow at 100 mbar [l/min]	3.5	3.5	-	-
max. Pressure [mbar]	1700	1700	-	-
<b>Vacuum Side</b>				
Flow at -100 mbar [l/min]	3.4	3.4	3.4	3.4
max. Vacuum [mbar]	-620	-620	-700	-700
Higher performances on request				
<b>Motor / Power Consumption</b>				
Standard Motor Type	iron core / sintered bearings			
max. Nominal Current [mA]	690	330	690	330
Optional Motor Type	-			
<b>Construction</b>				
Pump Head	standard optional	PPS customer specific (upon request)		
Diaphragm, Valves	standard optional	EPDM FKM / FFKM / PTFE		
Weight [g]	165		165	

## Performance Curves



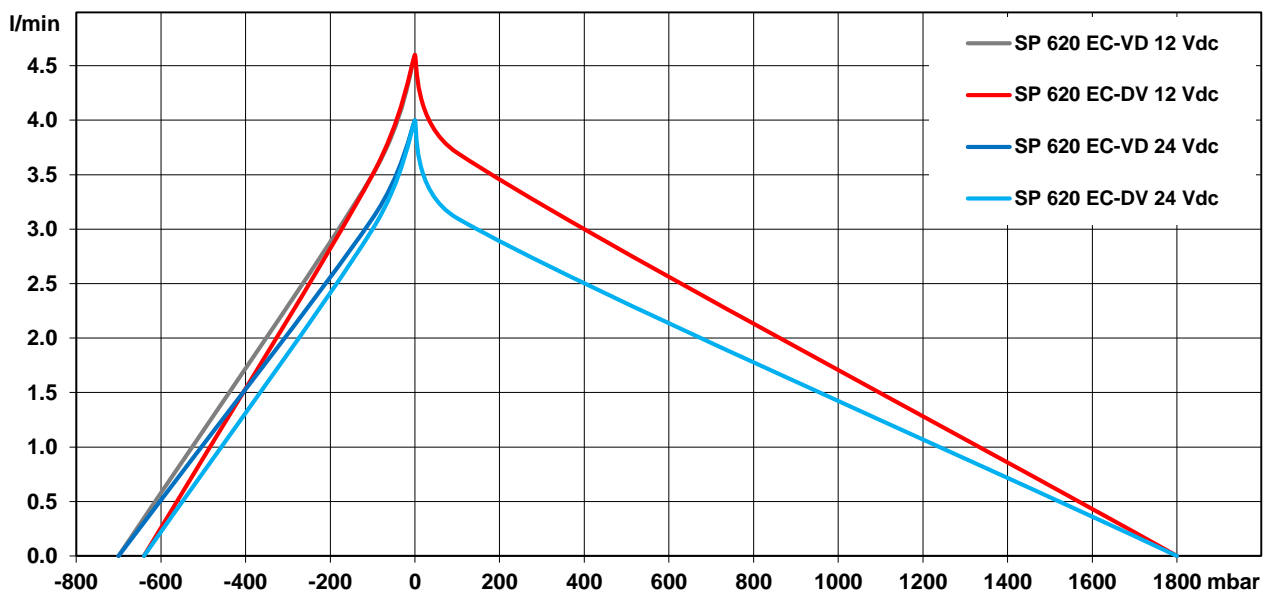


The pumps listed below represent a typical selection of our wide range of eccentric pumps and are intended for initial tests. **Customised versions** for your individual application would be made without additional costs - please contact us! All flow values given under norm conditions (according to DIN 1343). Optional materials can cause deviating performance values.

Designation	SP 620 EC-DV		SP 620 EC-VD	
Art. No.	7s57002	 7s57003 [1]	7s57016	 7s57063 [1]
Operating Voltage [Vdc]	12	24	12	24
<b>Pneumatic Performance</b>				
Free Flow [l/min]	4.6	4.0	4.6	4.0
<b>Pressure Side</b>				
Flow at 100 mbar [l/min]	3.7	3.1	-	-
max. Pressure [mbar]	1800	1800	-	-
<b>Vacuum Side</b>				
Flow at -100 mbar [l/min]	3.5	3.0	3.5	3.1
max. Vacuum [mbar]	-640	-640	-700	-700
Higher performances on request				
<b>Motor / Power Consumption</b>				
Standard Motor Type	iron core / ball bearings			
max. Nominal Current [mA]	550	290	550	290
Optional Motor Type	sintered bearings			
<b>Construction</b>				
Pump Head	standard optional	PPS customer specific (upon request)		
Diaphragm, Valves	standard optional	EPDM FKM / FFKM / PTFE		
Weight [g]	184		184	

[1] These pumps are our basic types for initial tests. Quick availability: **Shipping within 24 hours!**

### Performance Curves

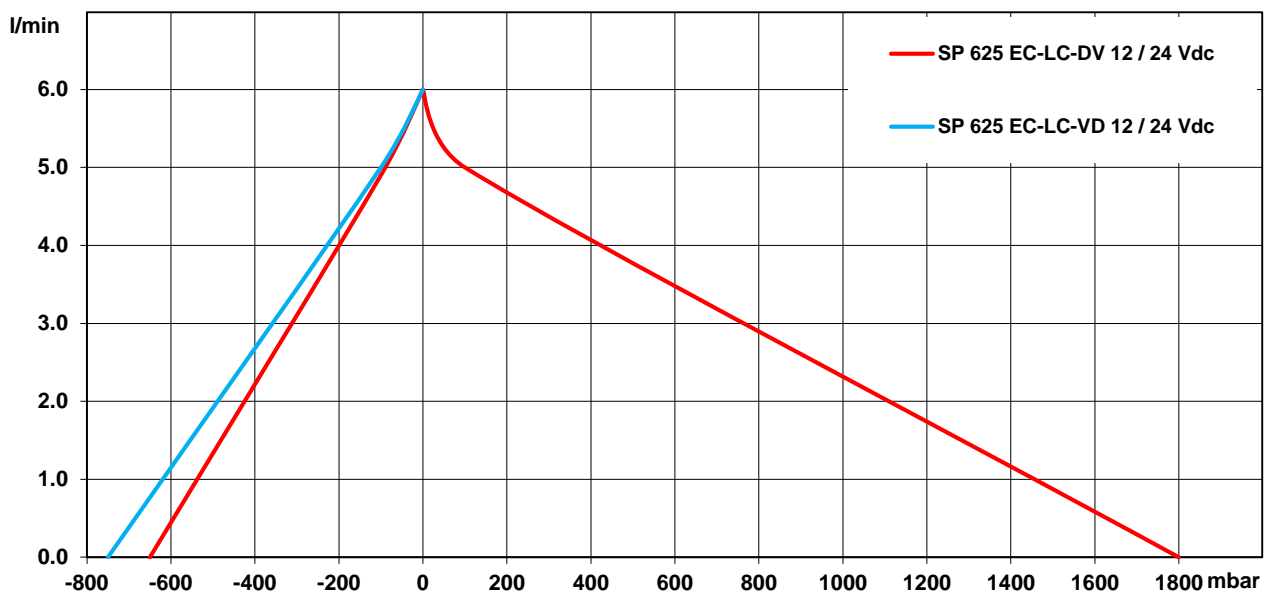




The pumps listed below represent a typical selection of our wide range of eccentric pumps and are intended for initial tests. **Customised versions** for your individual application would be made without additional costs - please contact us! All flow values given under norm conditions (according to DIN 1343). Optional materials can cause deviating performance values.

Designation		SP 625 EC-LC-DV		SP 625 EC-LC-VD	
Art. No.		7s57276	7s57277	7s57278	7s57279
Operating Voltage [Vdc]		12	24	12	24
<b>Pneumatic Performance</b>					
Free Flow [l/min]		6.0	6.0	6.0	6.0
<b>Pressure Side</b>					
Flow at 100 mbar [l/min]		5.0	5.0	-	-
max. Pressure [mbar]		1800	1800	-	-
<b>Vacuum Side</b>					
Flow at -100 mbar [l/min]		4.9	4.9	5.0	5.0
max. Vacuum [mbar]		-650	-650	-750	-750
Higher performances on request					
<b>Motor / Power Consumption</b>					
Standard Motor Type		iron core / ball bearing and sintered bearing			
max. Nominal Current [mA]		900	500	900	500
Optional Motor Type		-			
<b>Construction</b>					
Pump Head	standard optional	PPS customer specific (upon request)			
Diaphragm, Valves	standard optional	EPDM FKM / FFKM / PTFE			
Weight [g]		220		220	

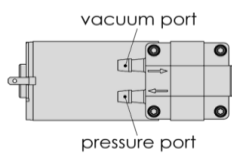
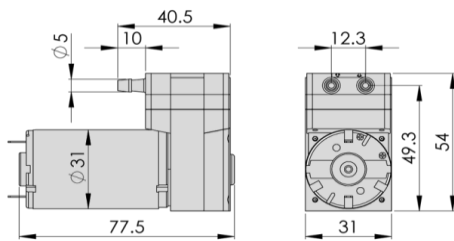
**Performance Curves**



Am Lichtbogen 7 • 45141 Essen • Germany  
 Phone: +49 201 31697-0 • Fax: +49 201 31697-29  
 e-mail: [info@schwarzer.com](mailto:info@schwarzer.com) • <http://www.schwarzer.com>

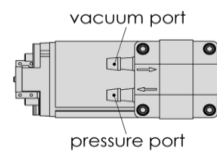
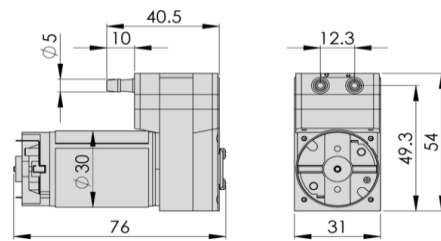


**SP 600 EC / 620 EC-DV / 620 EC-VD**



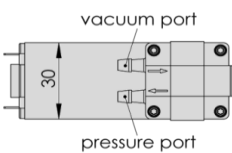
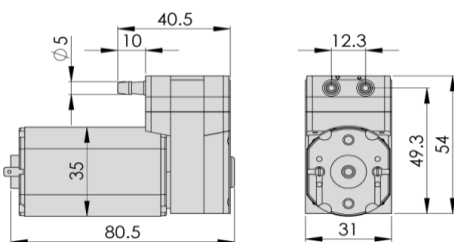
3D CAD Data:  
▶ Download STEP  
▶ Download IGES

**SP 600 EC-LC / 620 EC-LC-DV / 620 EC-LC-VD**



3D CAD Data:  
▶ Download STEP  
▶ Download IGES

**SP 625 EC-LC-DV / 625 EC-LC-VD**



3D CAD Data:  
▶ Download STEP  
▶ Download IGES

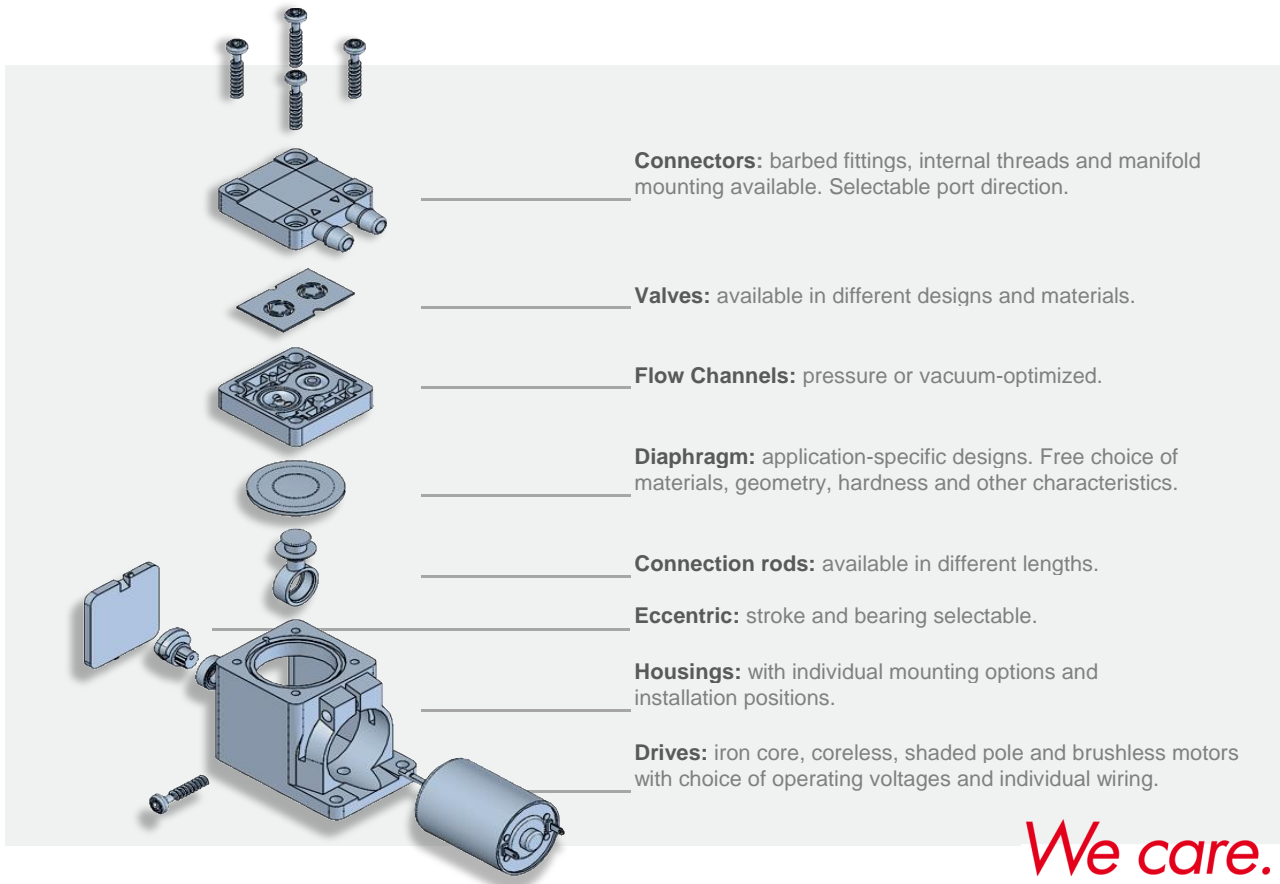
Standard: connection ports as shown  
Optional: 3 other port positions possible

You can also download the 3D CAD data on the SP website:  
▶ [www.schwarzer.com/download](http://www.schwarzer.com/download)



### Customising Examples

Customising without compromises is extremely important to us. We develop precision pumps in direct collaboration with our customers - with all parameters exactly adapted to the respective application. Thanks to the modular pump design, this is done without added development-related costs! We develop the ideal pump for you. Uncompromising and reliable.



### Installation Notes

In order to minimise noise and vibration we recommend securing the pump in one of the following ways:

- with rubber mounting (see "Accessories")
- with padded double sided adhesive tape
- with Velcro (hook and loop) tape for easy assembly and service
- Put the pump in a box lined with foam. Motor wires and tubing for the pump can lead through a hole in the side of the box.

### Accessories

Schwarzer Precision offers a comprehensive portfolio of pump accessories such as:

- mountings
- silencers + filters
- electronics
- check valves + pressure switches

For further information please consider the accessories data sheet or contact us for technical consultation.

► [Download PDF "Accessories"](#)

You can also download the PDF "Accessories" on our website:

► [www.schwarzer.com/accessories](http://www.schwarzer.com/accessories)