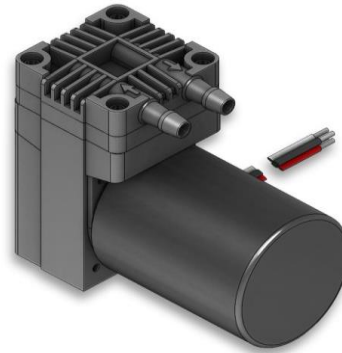


SP 620 EC-BL-L



SP 622 EC-BL-L

## *We care.*

**Customised Pumps - No Additional Costs!**

### Product Features

- Miniature diaphragm pump for liquids
- Chemical resistant versions available
- Very durable brushless drives with large control range
- Low weight and small size
- Self-priming
- Low noise and reduced vibrations
- Installation in any mounting orientation allows simple device integration
- Oil-free and maintenance-free

### Application Examples

- Industrial applications
- Medical applications
- Laboratory applications
- Analytical applications
- Cooling and heating
- Cleaning and disinfection
- Inkjet printers and reprography
- Fuel cells
- Pipetting
- Random access analyzers

and many more...

### Customisation

- We offer your customised precision pump without additional costs - even for small batches
- Outstanding quality
- Excellent technical consultation and service by experts
- More than 40 years experience in pump applications
- Fast delivery - order your sample now!

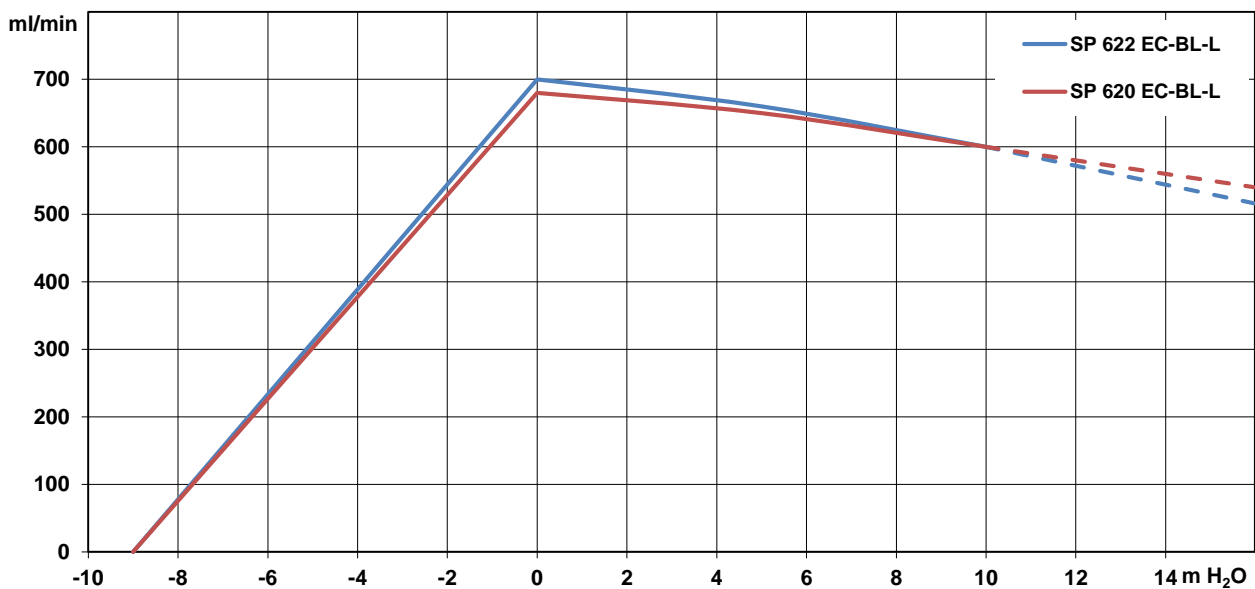


# SP 620 / 622 EC-BL-L

The pumps listed below represent a typical selection of our wide range of eccentric pumps and are intended for initial tests. **Customised versions** for your individual application would be made without additional costs - please contact us! All flow values given under norm conditions (according to DIN 1343). Optional materials can cause deviating performance values.

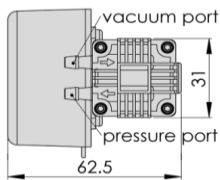
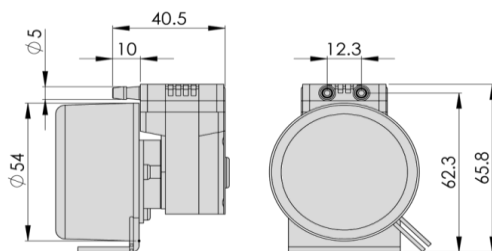
Designation	SP 620 EC-BL-L		SP 622 EC-BL-L	
Operating Voltage [Vdc]	12	24	12	24
Art.No.	7s57304	7s57305	7s57306	7s57307
<b>Hydraulic Performance (measured with water at 20°C)</b>				
Free Flow [ml/min]	680	680	700	700
<b>Pressure Side</b>				
Flow at 10 m H <sub>2</sub> O [ml/min]	600	600	600	600
max. Pressure Height [m H <sub>2</sub> O]	10.0	10.0	15.0	15.0
<i>Although the pumps are able to produce pressure above 10 m H<sub>2</sub>O, it is not recommended to exceed this limit!</i>				
<b>Vacuum Side</b>				
max. Suction Height (filled system) [m H <sub>2</sub> O]	-9.0	-9.0	-9.0	-9.0
max. Vacuum (dry) [mbar]	-600	-600	-600	-600
<b>Motor / Power Consumption</b>				
Standard Motor	brushless, analog control / ball bearings		brushless, analog or PWM control / ball bearings	
max. Nominal Current [mA]	700	400	600	400
Optional Motor Type	brushless, analog or PWM control or without internal electronics		brushless, analog control or without internal electronics	
<b>Construction</b>				
Pump Head	standard optional	PPS customer specific (upon request)		
Diaphragm, Valves	standard optional	EPDM FKM / FFKM / PTFE		
Weight [g]	280		190	

## Performance Curves



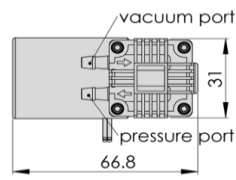
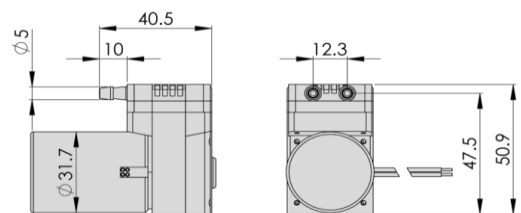


**SP 620 EC-BL-L**



3D CAD Data:  
▶ Download STEP  
▶ Download IGES

**SP 622 EC-BL-L**



3D CAD Data:  
▶ Download STEP  
▶ Download IGES

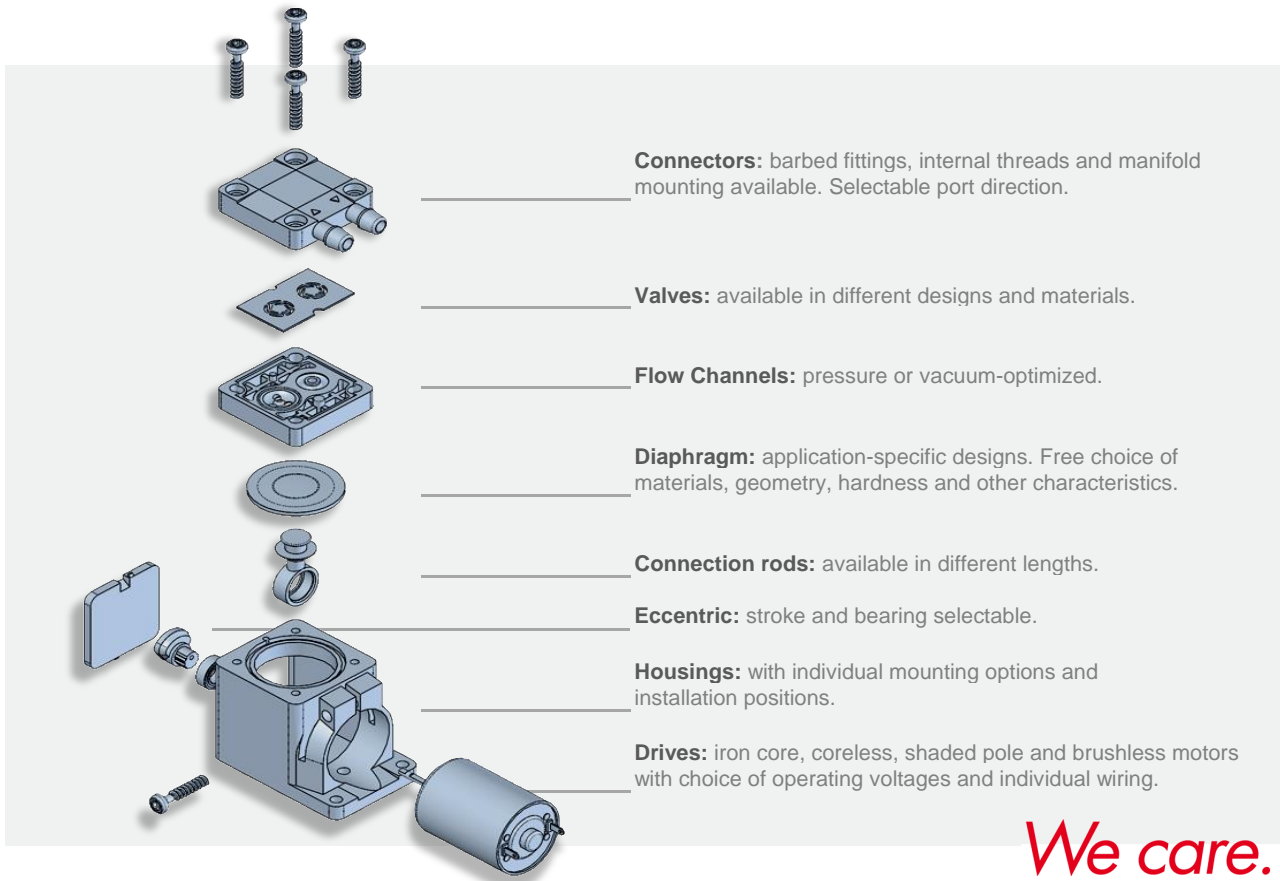
Standard: connection ports as shown  
Optional: 3 other port positions possible

You can also download the 3D CAD data on the SP website:  
▶ [www.schwarzer.com/download](http://www.schwarzer.com/download)



## Customising Examples

Customising without compromises is extremely important to us. We develop precision pumps in direct collaboration with our customers - with all parameters exactly adapted to the respective application. Thanks to the modular pump design, this is done without added development-related costs! We develop the ideal pump for you. Uncompromising and reliable.



## Installation Notes

In order to minimise noise and vibration we recommend securing the pump in one of the following ways:

- with rubber mounting (see "Accessories")
- with padded double sided adhesive tape
- with Velcro (hook and loop) tape for easy assembly and service
- Put the pump in a box lined with foam. Motor wires and tubing for the pump can lead through a hole in the side of the box.

## Accessories

Schwarzer Precision offers a comprehensive portfolio of pump accessories such as:

- mountings
- silencers + filters
- electronics
- check valves + pressure switches

For further information please consider the accessories data sheet or contact us for technical consultation.

► [Download PDF "Accessories"](#)

You can also download the PDF "Accessories" on our website: ► [www.schwarzer.com/accessories](http://www.schwarzer.com/accessories)