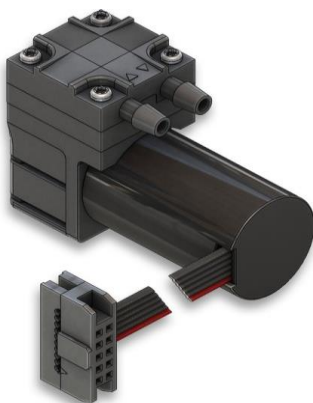


SP 270 EC-LC-L



SP 270 EC-L
SP 270 EC-DB-L



SP 270 EC-BL-L

We care.

Customised Pumps - No Additional Costs!

Product Features

- Micro diaphragm pump for liquids
- Chemical resistant versions available
- From low-cost to durable brush-less drives
- Low weight and extremely small size
- Applicable for noise- and vibration-sensitive environments
- Self-priming
- Installation in any mounting orientation allows simple device integration
- Oil-free and maintenance-free

Application Examples

- Industrial applications
- Medical applications
- Laboratory applications
- Analytical applications
- Cooling and heating
- Cleaning and disinfection
- Inkjet printers and reprography

and many more...

Customisation

- We offer your customised precision pump without additional costs - even for small batches
- Our modular concept allows easy adaptations
- Outstanding quality - Made in Germany
- Excellent technical consultation and service by experts
- More than 40 years experience in pump applications
- Fast delivery - order your sample now!



Schwarzer
Precision


Am Lichtbogen 7 • 45141 Essen • Germany
Phone: +49 201 31697-0 • Fax: +49 201 31697-29
e-mail: info@schwarzer.com • <http://www.schwarzer.com>



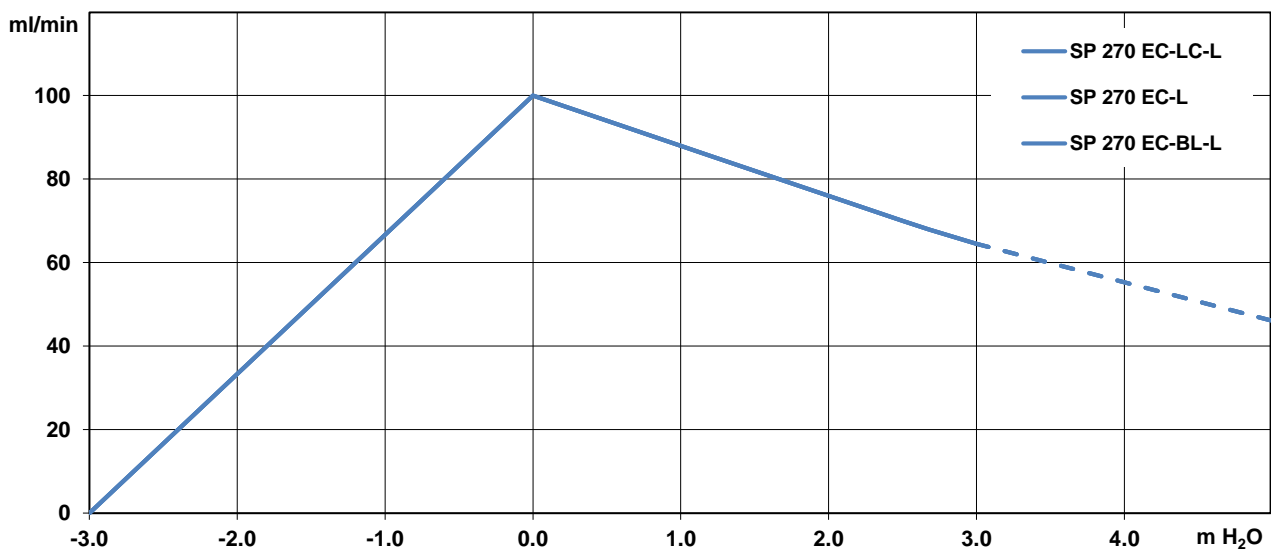
The pumps listed below represent a typical selection of our wide range of eccentric pumps and are intended for initial tests.

Customised versions for your individual application would be made without additional costs - please contact us!

All flow values given under norm conditions (according to DIN 1343). Optional materials can cause deviating performance values.

Designation	SP 270 EC-LC-L			SP 270 EC-L			SP 270 EC-BL-L
Art.No.	7s55160	7s55161	 7s55156 [1]	7s55157	7s55158	7s55159	7s55155
Operating Voltage [Vdc]	3	5	12	3	5	12	12
Hydraulic Performance (measured with water at 20°C)							
Free Flow [ml/min]	100	100	100	100	100	100	100
Pressure Side							
Flow at 2,5 m H ₂ O [ml/min]	70	70	70	70	70	70	70
max. Pressure Height [m H ₂ O]	10	10	10	10	10	10	10
Although the pumps are able to produce pressure above 10 m H ₂ O, it is not recommended to exceed this limit!							
Vacuum Side							
max. Suction Height (filled system) [m H ₂ O]	-3.0	-3.0	-3.0	-3.0	-3.0	-3.0	-3.0
max. Vacuum (dry) [mbar]	-300	-300	-300	-300	-300	-300	-300
Motor / Power Consumption							
Standard Motor	iron core / sintered bearings			skew wound / sintered bearings			brushless, analog control / ball bearings
For extended lifetime ball bearings are recommended!							
max. Nominal Current [mA]	350	250	100	350	200	100	250
Optional Motor Type	-			ball bearings			PWM control
Construction							
Pump Head	standard	PPS			brushless		
	optional	customer specific (upon request)			analog control		
Diaphragm, Valves	standard	EPDM			ball bearings		
	optional	FKM			PWM control		
Weight [g]	25			29			23

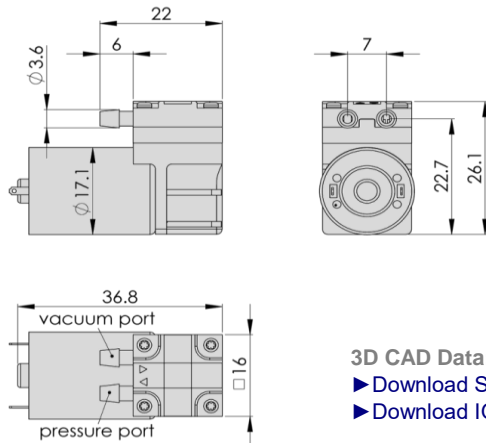
Performance Curves



Am Lichtbogen 7 • 45141 Essen • Germany
 Phone: +49 201 31697-0 • Fax: +49 201 31697-29
 e-mail: info@schwarzer.com • <http://www.schwarzer.com>

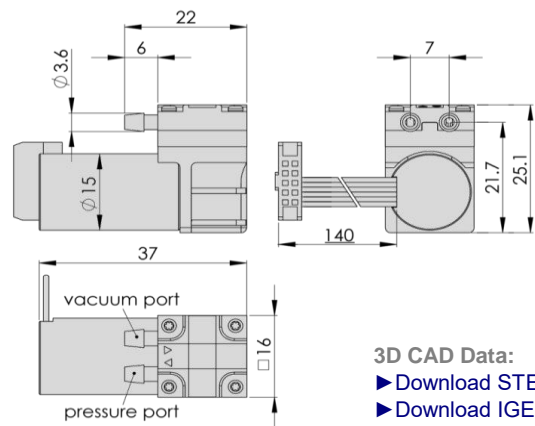


SP 270 EC-LC-L



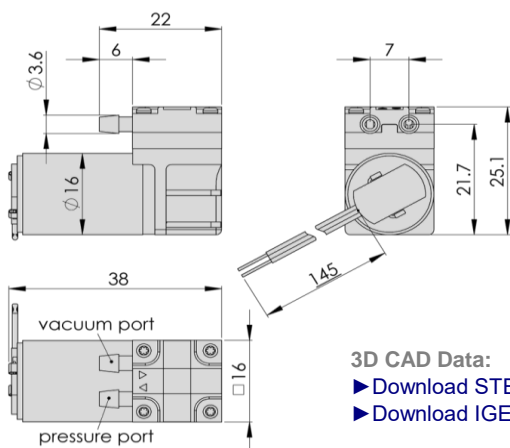
3D CAD Data:
▶ Download STEP
▶ Download IGES

SP 270 EC-BL-L



3D CAD Data:
▶ Download STEP
▶ Download IGES

SP 270 EC-L / 270 EC-DB-L



3D CAD Data:
▶ Download STEP
▶ Download IGES

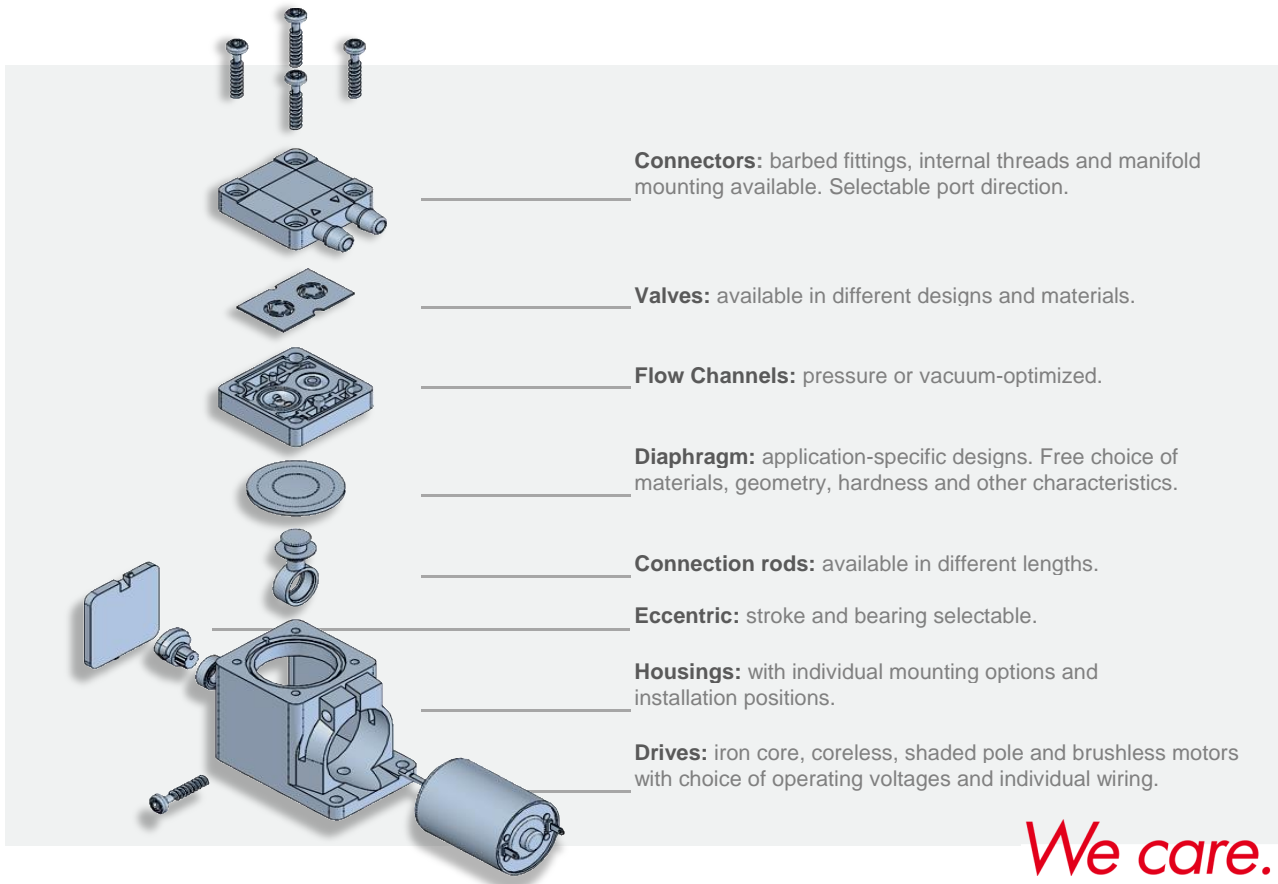
Standard: connection ports as shown.
Optional: 3 other port positions possible

You can also download the 3D CAD data on the SP website:
▶ www.schwarzer.com/download



Customising Examples

Customising without compromises is extremely important to us. We develop precision pumps in direct collaboration with our customers - with all parameters exactly adapted to the respective application. Thanks to the modular pump design, this is done without added development-related costs! We develop the ideal pump for you. Uncompromising and reliable.



Installation Notes

In order to minimise noise and vibration we recommend securing the pump in one of the following ways:

- with rubber mounting (see "Accessories")
- with padded double sided adhesive tape
- with Velcro (hook and loop) tape for easy assembly and service
- Put the pump in a box lined with foam. Motor wires and tubing for the pump can lead through a hole in the side of the box.

Accessories

Schwarzer Precision offers a comprehensive portfolio of pump accessories such as:

- mountings
- silencers + filters
- electronics
- check valves + pressure switches

For further information please consider the accessories data sheet or contact us for technical consultation.

► [Download PDF "Accessories"](#)

You can also download the PDF "Accessories" on our website:

► www.schwarzer.com/accessories



Am Lichtbogen 7 • 45141 Essen • Germany
Phone: +49 201 31697-0 • Fax: +49 201 31697-29
e-mail: info@schwarzer.com • <http://www.schwarzer.com>